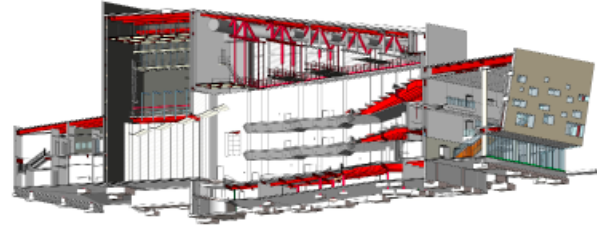


BORA



Design Technology Specialist

Bora Architecture & Interiors is seeking an energetic, self-motivated individual who shares our values of positive social impact, sustainable innovation and forward-thinking design to join our growing practice in Portland.

The ideal candidate will bring a comprehensive knowledge in 3D modeling and Autodesk Revit software with an interest in developing and maintaining custom assets and office standards, and supporting project teams. We are looking for someone with enthusiasm for integrated design and technical modeling, and a commitment to actively contribute to our creative and equitable firm culture.

Qualifications

- A degree or education in Architecture, Interior Design, or qualified BIM program
- 5-10 years of experience in an architectural office, or demonstrated understanding of the design, documentation and construction processes
- Demonstrates extensive Revit software experience, strong modeling skills, large team management and standards deployment
- Understands Revit BIM Collaborate Pro (BIM 360)
- Experience creating complex 3D families and integration with Revit Add-ins
- Ability to juggle multiple projects and prioritize workflow by communicating with senior team members
- Effective communication and "people" skills
- Ability and willingness to train and support staff knowledge growth
- Exceptional initiative and follow-through skills
- Eager to learn, able to receive constructive feedback
- Experience with software used for sustainability analysis, clash detection, point cloud integration, reality capture, etc. in Revit

Roles and Responsibilities

Direct Project Work:

- Lead project start-up in Revit and provide phase-specific support
- Train staff on practices and procedures to efficiently produce quality project deliverables
- Support project teams with focused Revit modeling and documentation tasks
- Develop project-specific 3D and 2D elements to accelerate design

investigations and expedite repetitive tasks

- Reinforce the QA/QC process by distributing real-time updates to project teams and models

Firm Support:

- Act as a liaison between project teams, Bora's QC Manager, and Revit Committee to identify opportunities for improvement to Bora's templates, standards and best practices
- Contribute to the development of Bora's Revit template content
- Educate staff on Bora's tools and processes through training, documentation and outreach
- Provide ongoing support for Revit content libraries to advance the quality and consistency of Revit families, components, and details

Research & Resource Development:

- Research emerging trends and technologies in BIM through conferences, professional organizations and social media
- Identify opportunities for improvement to Bora's internal process, application and integration of Revit and emerging technology into our project work

Compensation and Benefits

We care about the wellness of your whole person. Bora is proud to support its employees with a robust benefits package which includes:

- Competitive pay commensurate with experience
- Comprehensive medical, dental and vision insurance
- Flexible Spending Account (FSA)
- Paid Family Leave
- Traditional and Roth 401(k)
- Pre-tax TriMet Hop Fastpass
- In-office bike storage
- Use of the Bora Beach House
- Hybrid Work Schedule

To Apply

Please send your letter of interest, resume and work samples to careers@bora.co. In order to counter implicit bias in our recruitment process, we ask that candidates not include headshots in their application.